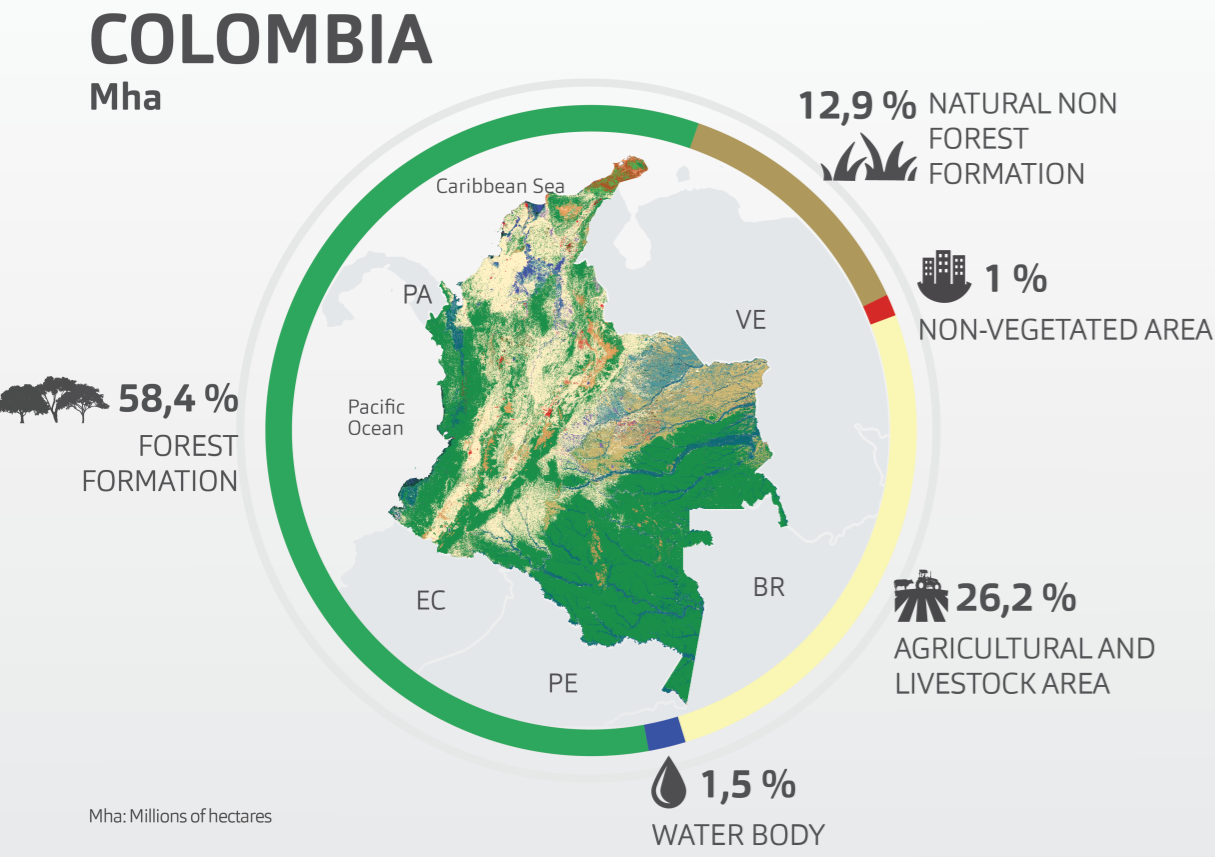
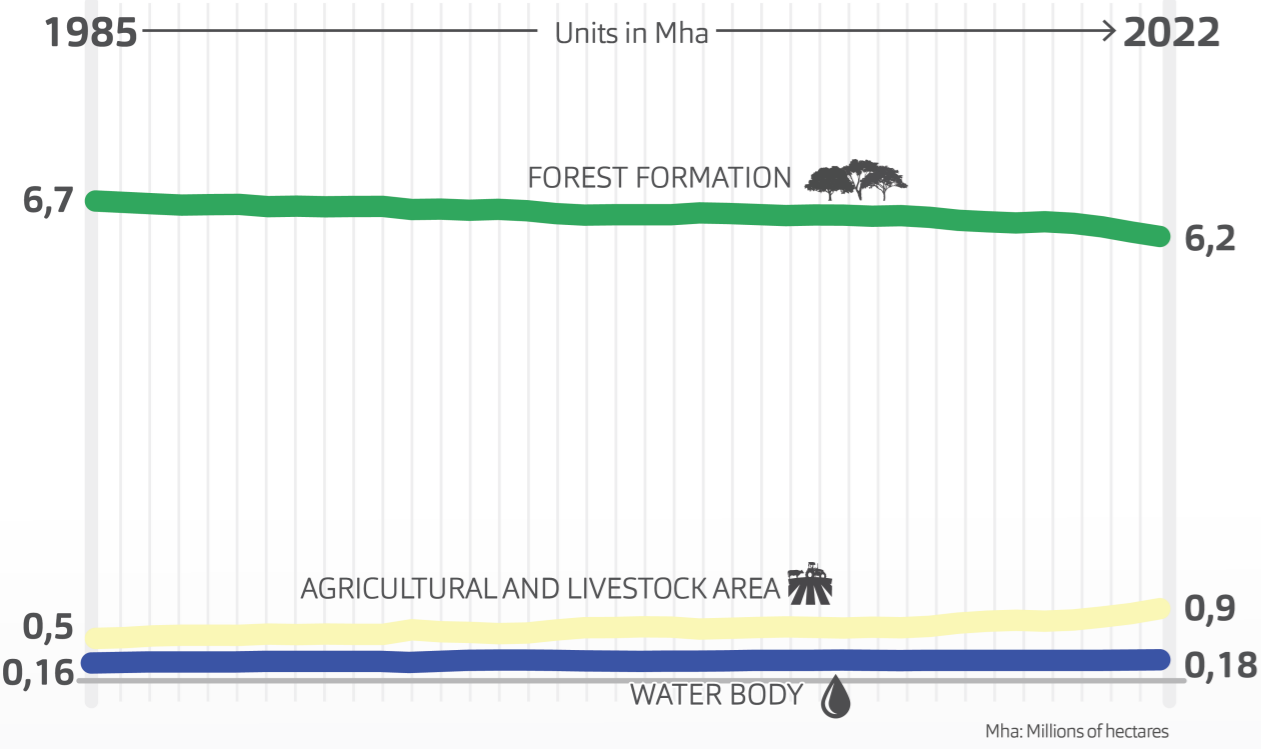
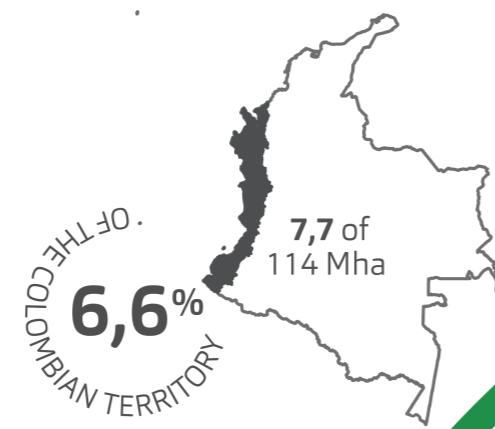


# Pacific

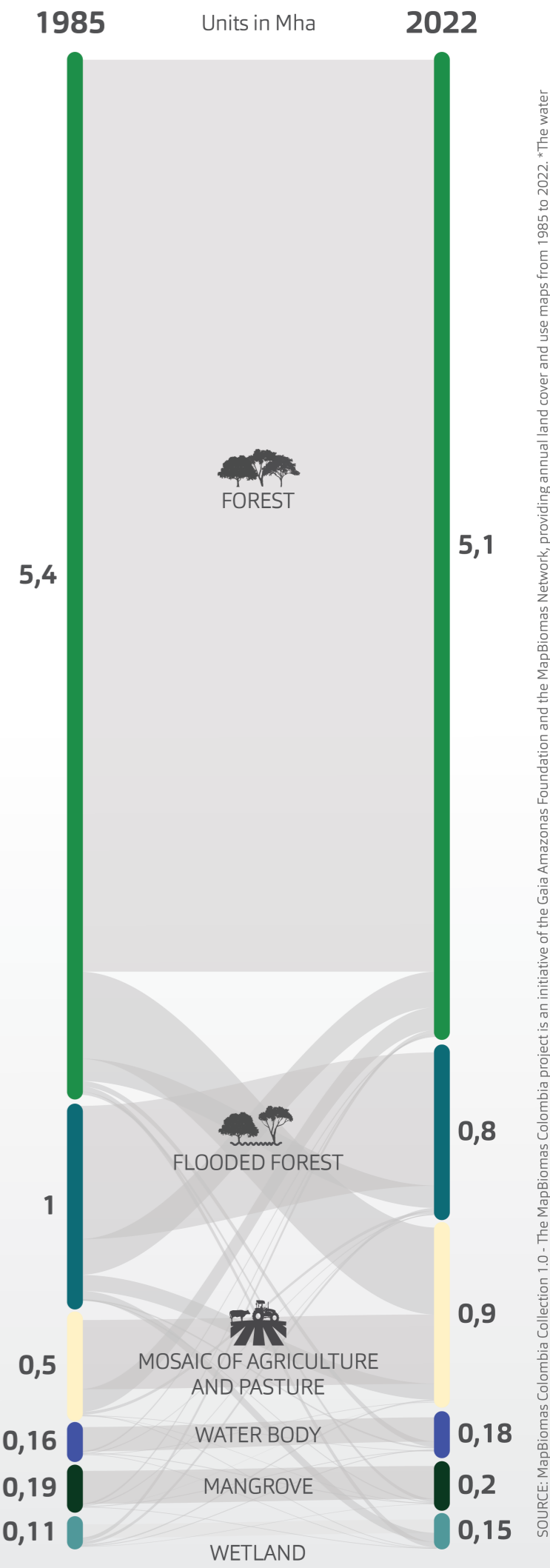
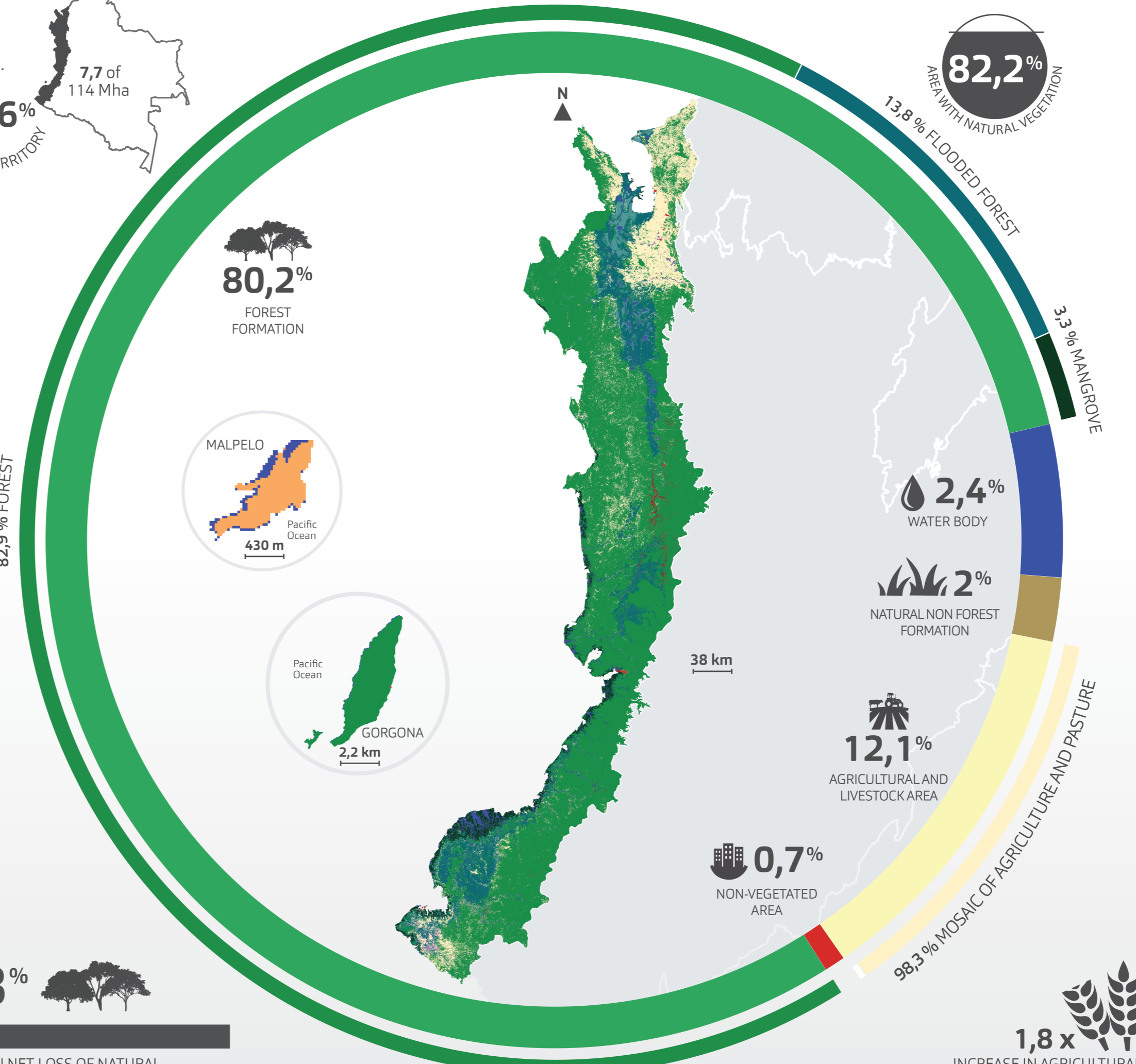
## Annual land cover and land use dynamics (1985-2022)



**6,8%**

0,5 MHA IN NET LOSS OF NATURAL VEGETATION BETWEEN 1985 AND 2022

Net Loss: Indicates the balance between loss/deforestation and gain/regeneration over the period



SOURCE: MapBiomas Colombia Collection 1.0 - The MapBiomas Colombia project is an initiative of the Gaia Amazonas Foundation and the MapBiomas Network, providing annual land cover and use maps from 1985 to 2022. \*The water coverage values were calculated without the coastal buffer area.

- FOREST FORMATION
- FOREST
- FLOODED FOREST
- MANGROVE
- NATURAL NON FOREST FORMATION
- WETLAND
- ROCKY OUTCROP
- OTHER NON FOREST FORMATION
- AGRICULTURAL AND LIVESTOCK AREA
- PALM OIL
- FOREST PLANTATION
- MOSAIC OF AGRICULTURE AND PASTURE
- NON-VEGETATED AREA
- BEACH, DUNE AND SAND SPOT
- INFRASTRUCTURE
- MINING
- OTHER NON-VEGETATED AREA
- WATER BODY
- RIVER, LAKE OR OCEAN
- AQUACULTURE