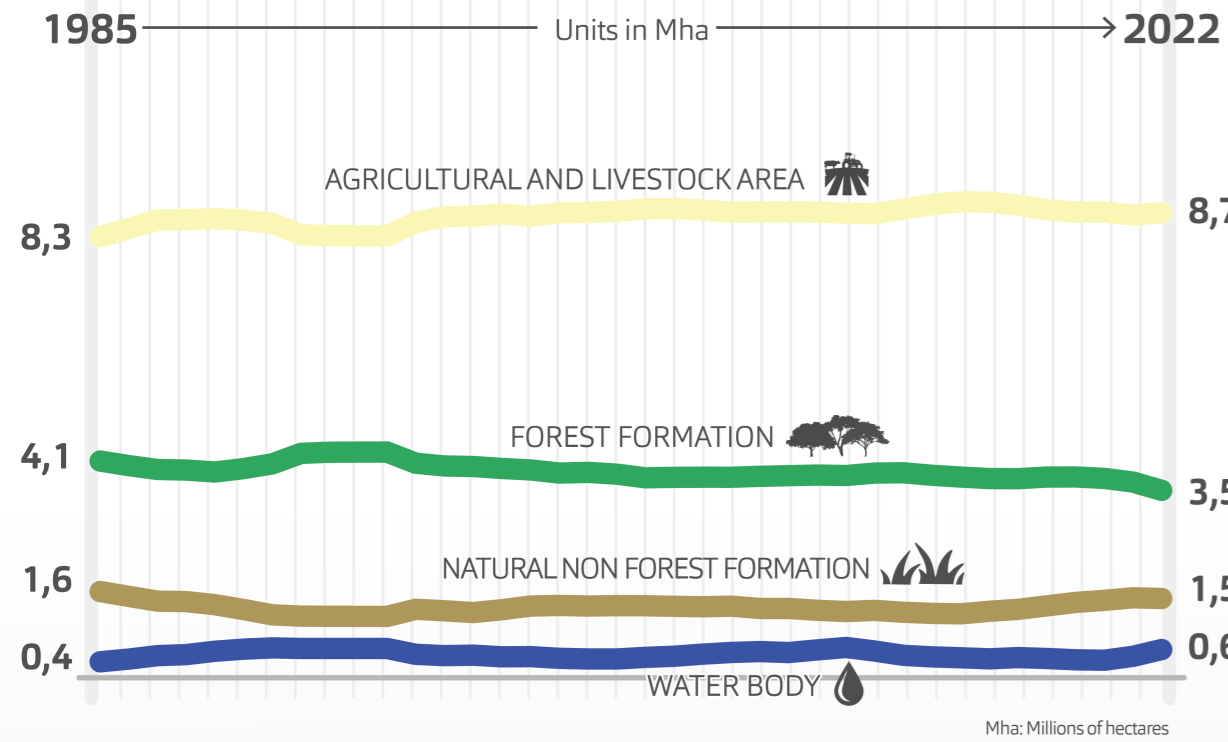
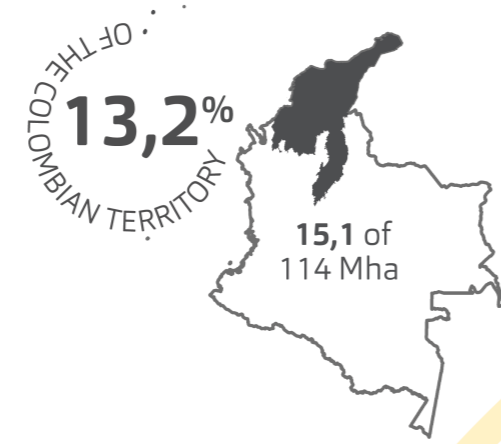


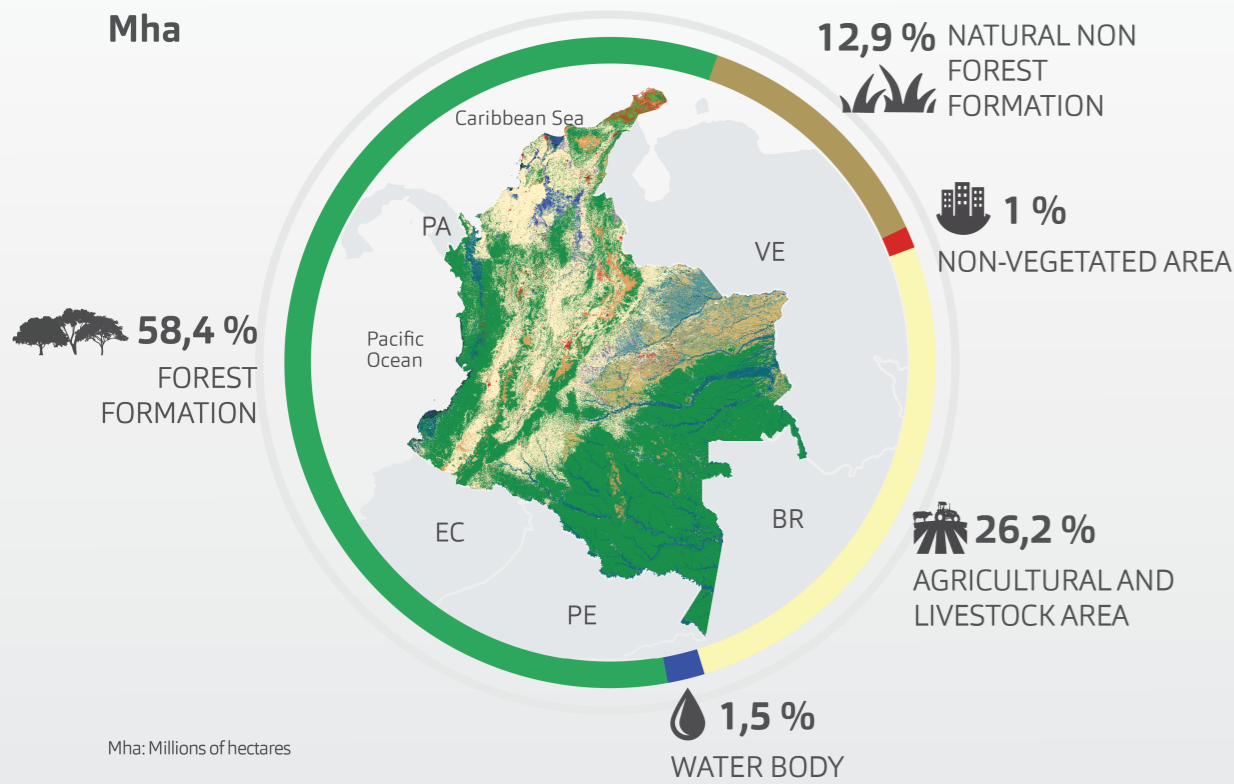
# Caribe

## Annual land cover and land use dynamics (1985-2022)

For more information, please visit: [colombia.mapbiomas.org](http://colombia.mapbiomas.org)

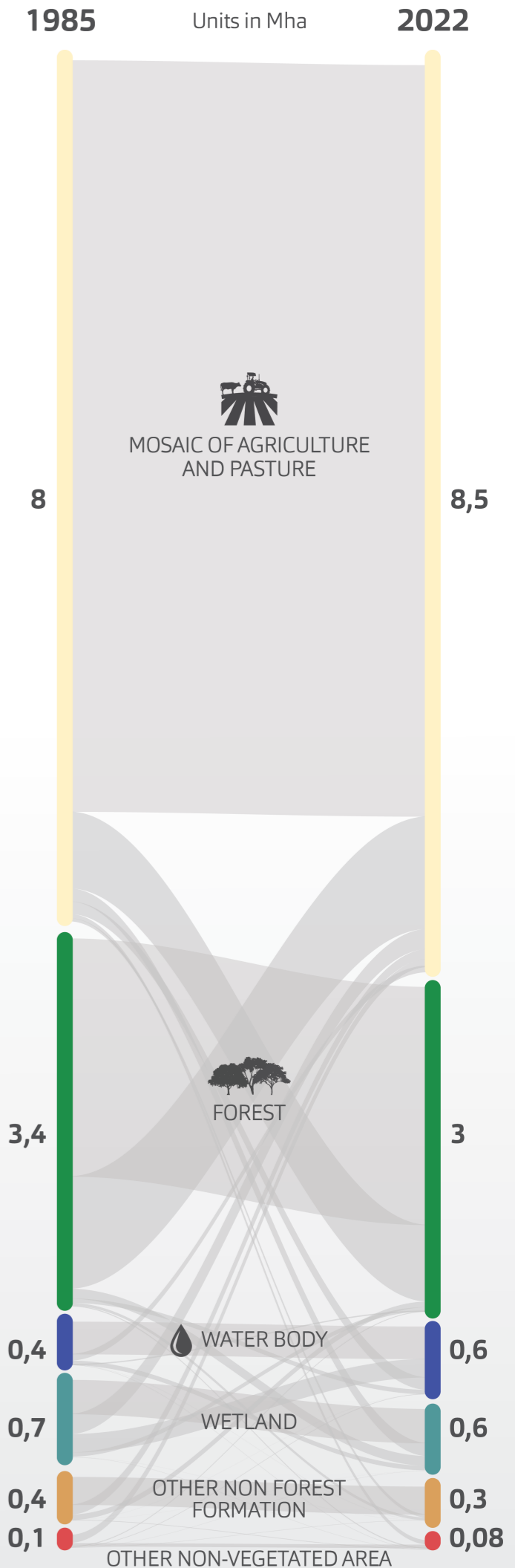
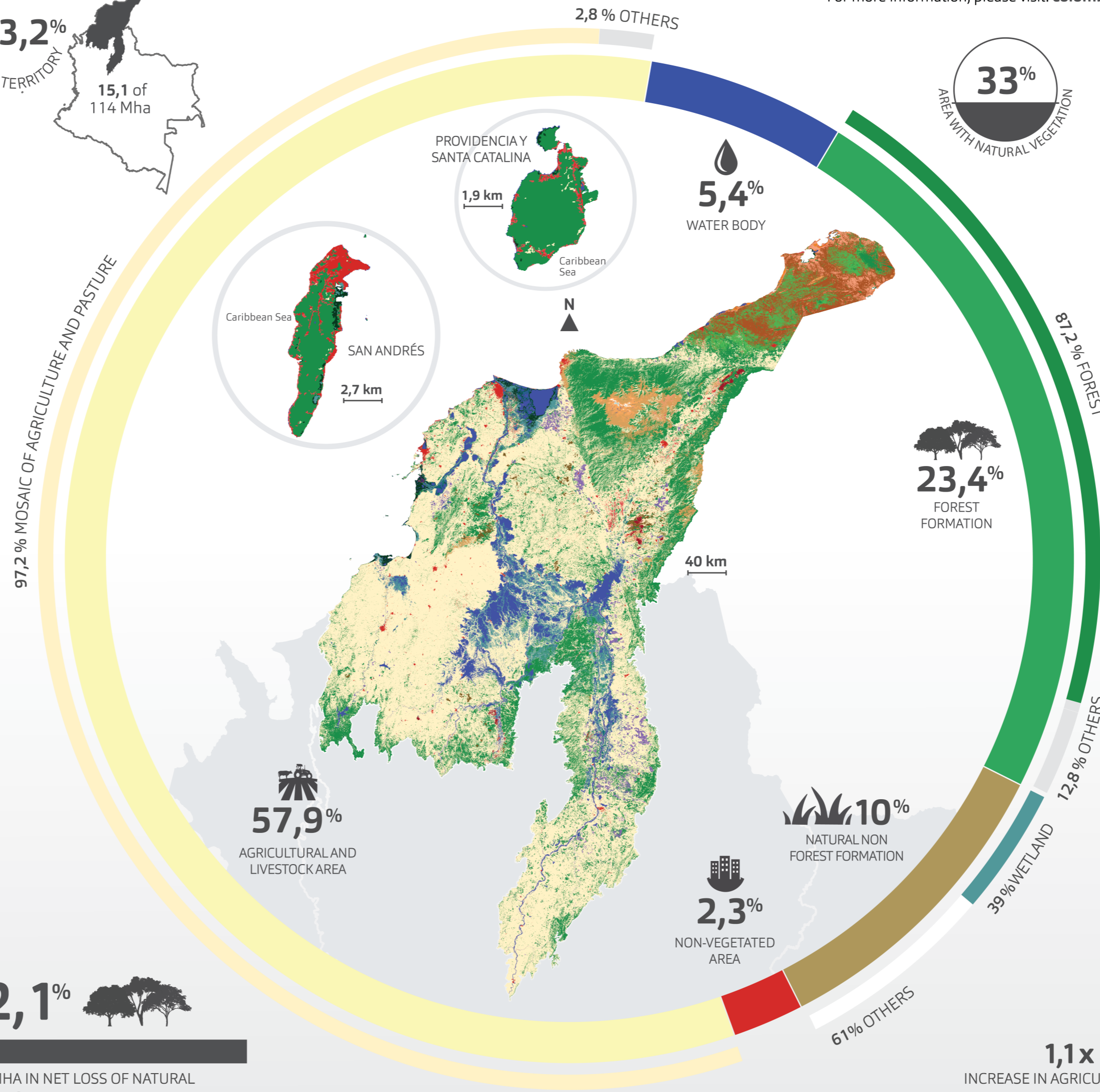


### COLOMBIA Mha



12,1%  
687,8 MHA IN NET LOSS OF NATURAL VEGETATION BETWEEN 1985 AND 2022

Net Loss: Indicates the balance between loss/deforestation and gain/regeneration over the period



SOURCE: MapBiomas Colombia Collection 1.0 - The MapBiomas Colombia project is an initiative of the Gaia Amazonas Colombia Foundation and the MapBiomas Network, providing annual land cover and use maps from 1985 to 2022. \*The water coverage values were calculated without the coastal buffer area.

- FOREST FORMATION
- FOREST
- FLOODED FOREST
- MANGROVE
- WOODED SAND VEGETATION
- NATURAL NON FOREST FORMATION
- WETLAND
- ROCKY OUTCROP
- HYPERSALINE TIDAL FLAT
- HERBACEOUS SAND VEGETATION
- OTHER NON FOREST FORMATION
- AGRICULTURAL AND LIVESTOCK AREA
- FOREST PLANTATION
- PALM OIL
- MOSAIC OF AGRICULTURE AND PASTURE
- NON-VEGETATED AREA
- BEACH, DUNE AND SAND SPOT
- INFRASTRUCTURE
- MINING
- OTHER NON-VEGETATED AREA
- WATER BODY
- RIVER, LAKE OR OCEAN
- GLACIER
- AQUACULTURE